



LNB

KU-BAND PLL

15000L



TYPICAL SPECIFICATIONS

Noise figure	0.7 to 0.9 dB depending on model number
L.O. stability (over temperature excl offset)	±50 kHz
Phase noise (SSB)	-65 dBc/Hz at 1kHz -75 dBc/Hz at 10kHz -85 dBc/Hz at 100kHz
Input VSWR	2.0 : 1
Output VSWR	2.0 : 1

Conversion gain	62 dB
Output P1dB	6 dBm
Power requirements	+15 to +24 V supplied through center conductor of IF cable
Current drain	170 mA
Dimensions	110 (L) x 42 (W) x 42 (H) mm (4.3 x 1.7 x 1.7 in)
Weight	300g / 10.6 oz

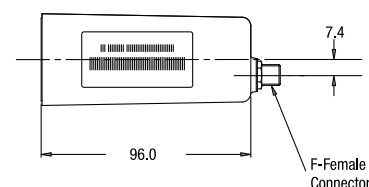
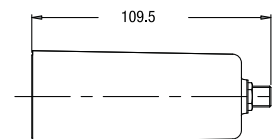
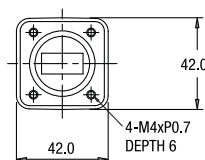
FREQUENCY BANDS AVAILABLE

Typical service	15000LA	15000LB	15000LC
Input frequency (GHz)	11.70 to 12.20	12.25 to 12.75	10.95 to 11.70
L.O. frequency (GHz)	10.75	11.30	10.00
Output frequency (MHz)	950 to 1450	950 to 1450	950 to 1700

HOW TO ORDER KU-BAND 15000L

15000LAF

CONNECTOR.....	F - 75 Ohm N - 50 Ohm
FREQUENCY.....	A - 11.70 - 12.20 GHz B - 12.25 - 12.75 GHz C - 10.95 - 11.70 GHz
NOISE FIGURE.....	07 - 0.7 dB 08 - 0.8 dB 09 - 0.9 dB
L.O. STABILITY.....	50 - ±50 kHz
LNB SERIES #	



MECHANICAL DIAGRAM

