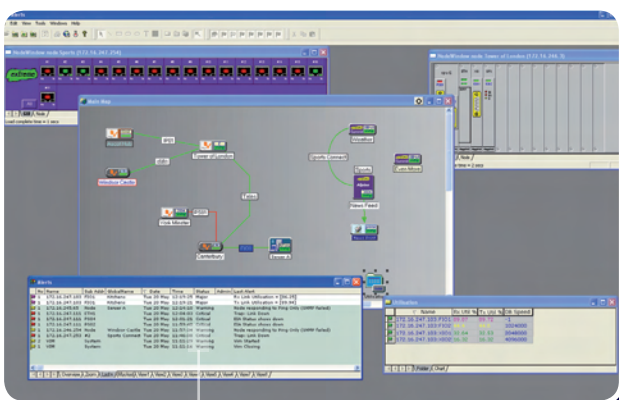


megaWATCH | Product Information

megaWATCH is a SNMP software based Network Management Application designed and developed by Vados Systems. It's a windows based application that allows customers to monitor their network and gather useful information about the condition and status of any Vados or non Vados products that have been deployed in that network.

megaWATCH is an extremely powerful tool that creates network maps (these are graphical views of the network and configuration). megaWATCH will regularly poll each piece of equipment in the network and provide a status on each element, right down to the port level.

megaWATCH is based on client server architecture and can be deployed as a standalone system or distributed across a number of workstations communicating with a server. Server databases can be supported on Windows or Unix operating systems. megaWATCH also supports a 'manager of managers' function where a number of servers need to be deployed for managing large networks.



FEATURES

- MS Access/SQL Server or Oracle database
- Remote workstations
- Alert manager with e-mail, export, launch, print, sounds, time filters, custom pages
- Configuration collector/archive
- User folder configuration
- Integrated MIB table viewer
- Port and CPU utilisation display
- ISDN connection monitoring
- Integrated Telnet terminal emulation with file transfer and macros
- Multi-level map and folder hierarchy
- Transparent GIF icons
- Customer user views via logon
- Folders display data as alphanumeric or charts
- Integrated Multi-Ping, DOS Ping, TFTP, Trace route, Telnet, MIB Table Viewer
- Hover over network object to see status and details

megaWATCH

Product Information

Enterprise Reports

Enterprise Reports produces highest quality network reports in a flexible format, and at a fraction of the cost of alternative offerings.

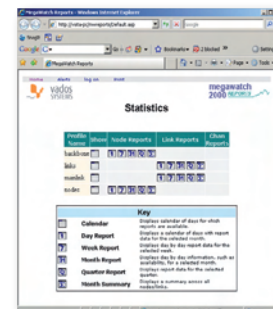
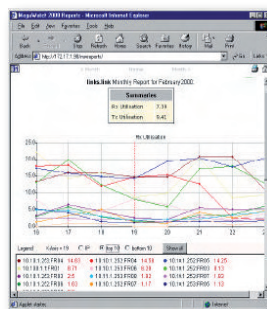
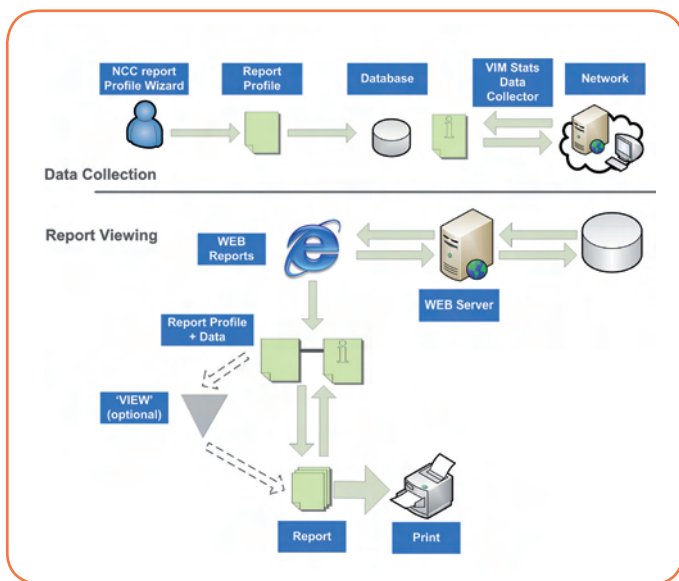
- One-off charge – no additional fees to add new network devices or create new reports.
- Based on Crystal Reports and Chart FX.
- May be run from Windows Scheduler for automatic report generation, with e-mail direct to the desktop.
- Output in HTML, PDF, RTF, MHT (web archive) formats. Print and e-mail.
- Mix of text and chart types. Ordering by name or parameter value. Optionally display device name, and or IP address.
- Configurable logos, report header and footer, column headings.
- Threshold charts show the percentage of time a monitored value was over five user-defined thresholds levels.
- Thermo-charts highlight 'hotspots' at a glance.
- Create time-window views onto the report data.

Web Reports

Web Reports module enables viewing of network reports from a Web Browser, using a Web Server in a megaWATCH system.

- One-off charge – no additional fees to add new network devices or create new reports.
- Password control allows different users to see only their own reports.
- Calendar function shows days for which data is available.
- Day, Week, Month, Quarter views with drill down.
- Chart entries can be ordered by IP address, Name or best/worst performers.
- Click network object to highlight others in the chart.
- Create additional reports (views) on a sub-set of the network objects selected from the main report.

Wizard report Process



Minimum requirements:

megaWATCH Server	megaWATCH Workstation
Pentium Processor 256Mhz with 1Ghz memory	Pentium Processor 256Mhz with 1Ghz memory
2.5 GByte Hard Drive and CD ROM Drive	1.7 GByte Hard Drive and CD ROM Drive
Graphics capability: 1024 x 768 x 64k colours	Graphics capability: 1024 x 768 x 64k colours
Database - Microsoft Access or Microsoft SQL Server	Windows 2000, 2003 or XP
Windows 2000, 2003 or XP	Ethernet LAN Adapter
Ethernet LAN Adapter	Optional sound card
Optional sound card	